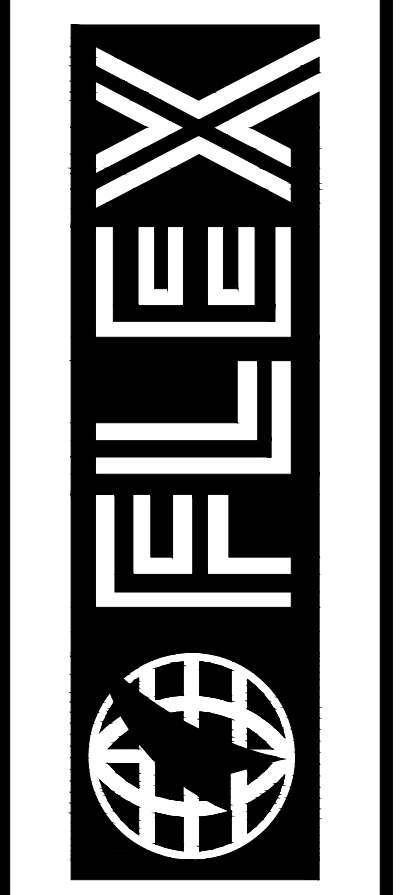
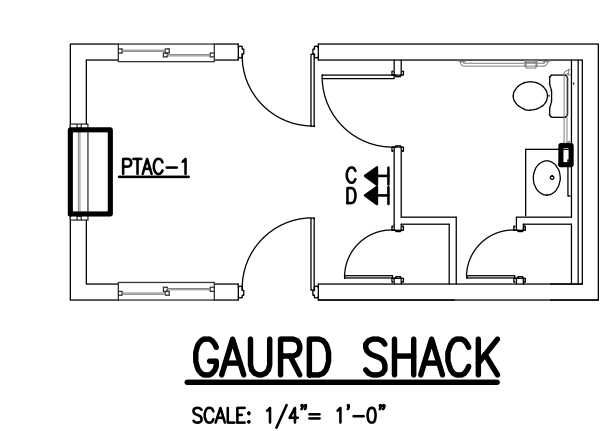
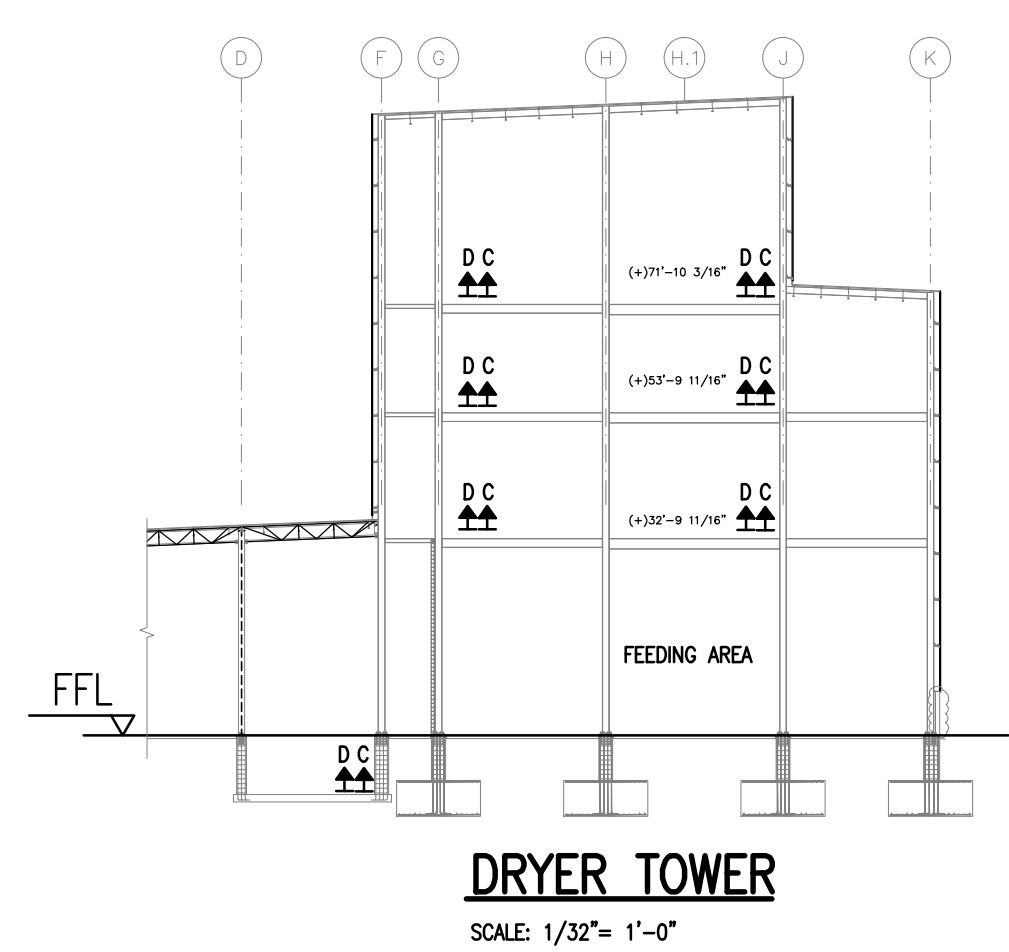
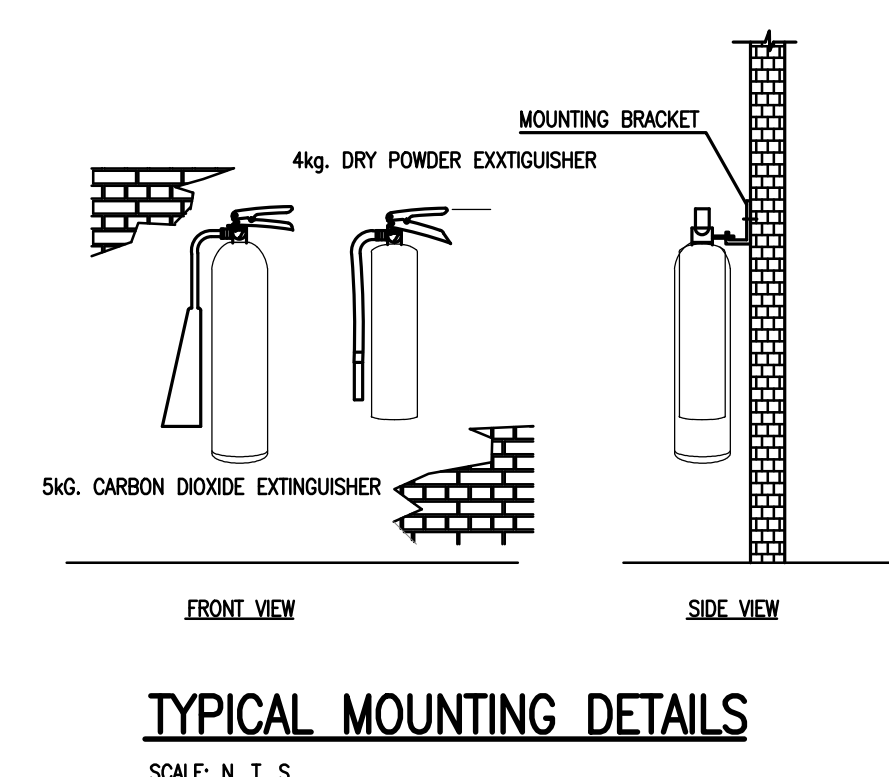


**FIRE EXTINGUISHER LAYOUT**  
SCALE: 1/32" = 1'-0"

FIRE EXTINGUISHER LEGEND	
SYMBOL	DESCRIPTION
▲c	4KG DRY POWDER FIRE EXTINGUISHER
▲d	5KG. CO2 FIRE EXTINGUISHER
EXIT	EXIT LIGHT



**FLEXFILMS, U.S.A., LLC**  
1221 NORTH BLACK BRANCH ROAD  
ELIZABETHTOWN, KENTUCKY 42702  
PROJECT L-12 BOPET U.S.A.

DATE	REVISION	BY
NOV. 11, 2011	VALUE ENGINEERING RE-DESIGN DOCUMENT	
JAN. 20, 2012	REVISION ASSOCIATED WITH REISED FLOOR PLAN	

DESIGN DOCUMENTS ARE THE PROPERTY OF VALUE ENGINEERING RE-DESIGN DOCUMENTS. NO PART OF THIS DOCUMENT IS TO BE REPRODUCED OR TRANSMITTED IN ANY FORM OR BY ANY MEANS, ELECTRONIC OR MECHANICAL, INCLUDING PHOTOCOPYING, RECORDING, OR BY ANY INFORMATION STORAGE AND RETRIEVAL SYSTEM, WITHOUT THE WRITTEN PERMISSION OF VALUE ENGINEERING RE-DESIGN DOCUMENTS.

PROJECT NO.	DESIGNED BY	DRAWN BY	CHECKED BY	DATE	SCALE
8529-02	TBW	RLD	SHT	JULY 2011	AS NOTED

Engineers  
Architects  
Planners  
**nse**  
OF KENTUCKY, INC.  
Phone: (859)223-8694  
Fax: (859)223-8007  
www.nselex.com

